

flexijet

Innovation CAD-measurement

User Examples

CAD point projection on site for positioning of prefabricated modular walls



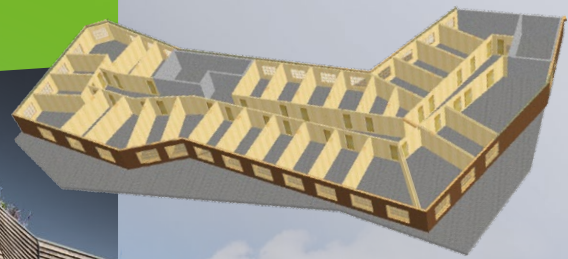
Carried out by Jochen Egbers, Metrik 3D GmbH
www.metrik3d.com



The 'Wälderhaus' is an excellence project of the international building exhibition Hamburg.

After transferring the CAD data from the planning department, the intersections and endpoints of the timber frame walls were accurately and quickly marked on site, using the point projection feature of Flexijet 3D laser measurement system.

Because of the point projection feature of Flexijet 3D, the walls of 3 levels were installed in only 6 days instead of the assumed 21 days.



Measure and draw your construction site in CAD at the same time and use the point projection feature to show CAD points relevant for installation. This way you save time and money!

This is the value the Flexijet 3D laser measurement system added to the user example presented above.



	Time saved	Hourly rate		
Savings with Flexijet 3D:	15 days	x 400 €	= 6 000 €	71.4 %
Increase of efficiency:				250.0 %

Asides from the time and cost savings during the site measurement and install, with Flexijet 3D you have the certainty to plan, construct and produce with the most accurate measurements possible, which sets the project up for success.

→ Flexijet 3D gives you certainty and professionalism from site measurement to installation.

Flexijet 3D offers a lot of advantages for your measurements too:



Collect site measurements with only one person



Instant graphic control on site



No missing dimensions or transmission errors



Creation of digital templates makes hard templates unnecessary



Measure without restrictions: 360° vertical and horizontal



Electronic Auto Leveling feature makes device easy to use, without manually leveling the tripod



Instant surface and space calculations



Interfaces to all common CAD programs and connection to CNC manufacturing